

**PURE
PRECISION**

**ENGINEERING
AND PRODUCTION
OF CLEANROOM
PRODUCTS**

Individual handling technology, components
and assemblies for cleanroom technology

CLEANROOM MATERIALS AT RÖHM

ALUMINUM ALLOYS

- AlZnMgCu1,5 F45 (AW-7075)
- AlMg4,5Mn (AW-5083)

STAINLESS STEELS

- X14CrMoS17 (1.4104)
- X2CrNiMo17-12-2 (1.404, V4A, NIROSTA)
- X2CrNiMoN22-5-3 (1.4462)
- X5CrNiCuNb17-4-4 N700 (1.4548)
- X5CrNiTi18-10 (1.4301, V2A)
- X6CrNiMoTi17-12-2 (1.4571)
- X90CrMoV18 (1.4112)
- Nitronic 60

SPECIAL PLASTIC

- Iglidur J and C
- Polyamide (PA)
- Polybenzimidazole (PBI)
- Polyetheretherketone (PEEK)
- Polyoxymethylene (POM)
- Polytetrafluoroethene (PTFE, Teflon)

ENGINEERING AND PRODUCTION OF CLEANROOM PRODUCTS FROM THE SPECIALIST FOR INDIVIDUAL HANDLING TECHNOLOGY

RÖHM has been producing clamping, gripping and handling technology for more than 110 years. Many large machine and plant manufacturers worldwide list us as a standard supplier for drill and lathe chucks, centers, robot gripping technology or clamping systems. Together with the companies it supplies,

RÖHM has now entered the cleanroom.

Our products are known for their exceptional combination of robustness, precision and intelligent force and motion control. This is particularly in demand in the cleanroom. This experience now also benefits your cleanroom products.

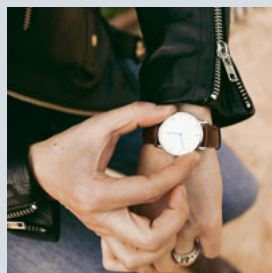
Take advantage of our know-how for cleanroom clamping, gripping and handling technology. RÖHM develops and produces components and assemblies for your production process.

EXPERIENCE WITH DIFFERENT INDUSTRIES



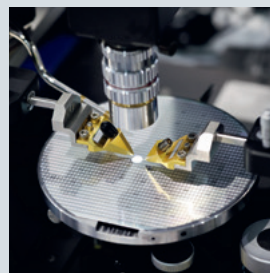
OPTICS

Clamping for finishing and installation of precision optical assemblies



PRECISION MECHANICS

Clamping and gripping tools for mechanical machining of housings for high-quality watches



SEMICONDUCTOR MANUFACTURING

Mechanical assemblies for plant and process solutions



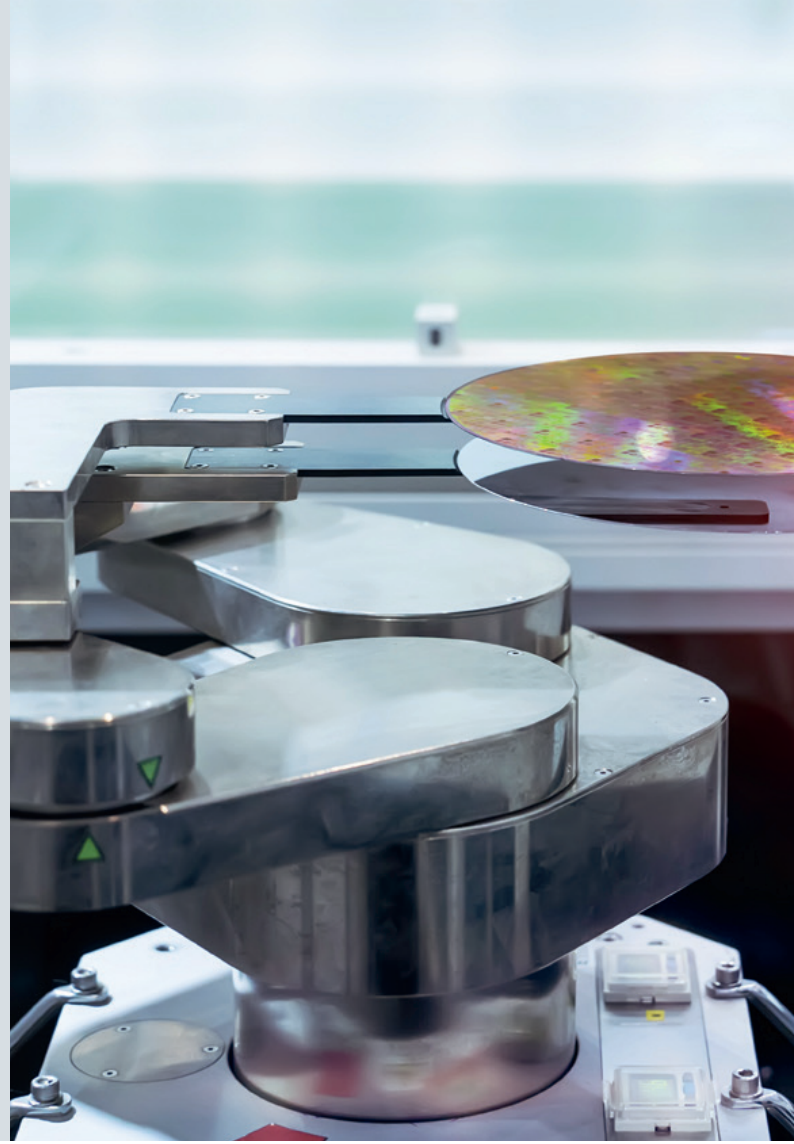
MEDICAL TECHNOLOGY

Clamping tools for finishing of implants

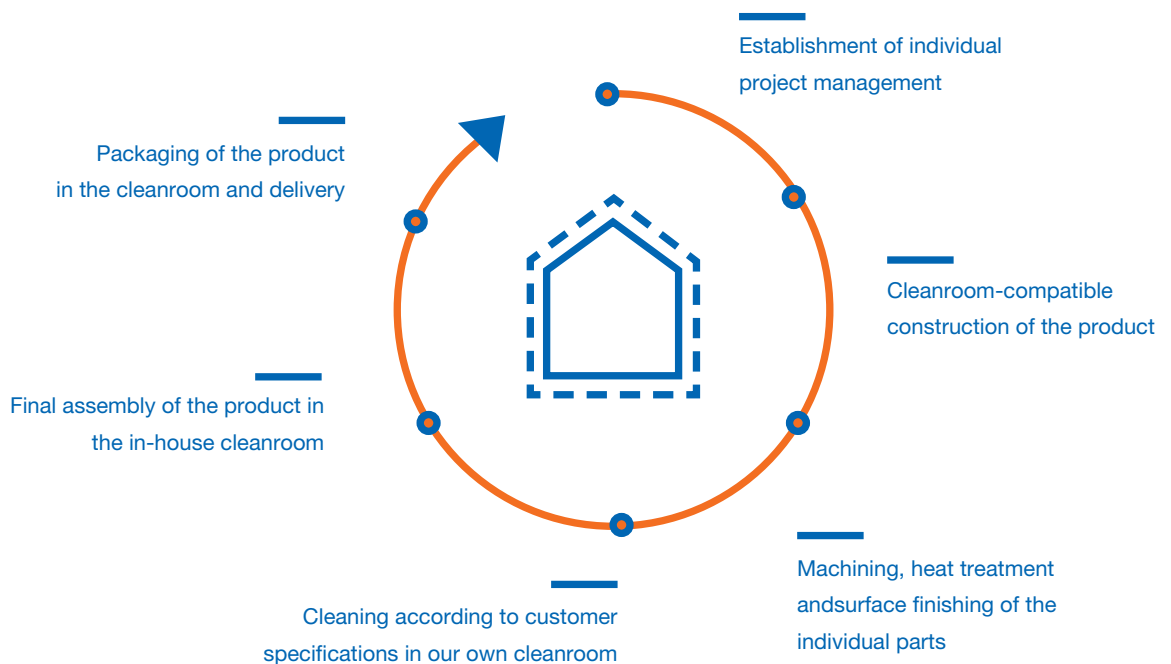
CLEANROOM-COMPATIBLE: THE PRODUCT DEVELOPMENT

Everything starts with individual product development, which considers the requirements of the cleanroom in addition to the solution of the actual task. It depends on three components: selection of materials, product design and manufacturing process.

Either RÖHM works according to your specifications – or our developers create the product themselves under framework conditions that are agreed with you beforehand. RÖHM knows what is important in the individual industries.



CLEANROOM COMPATIBLE: THE ENTIRE PROCESS



OWN MANUFACTURING: UP TO CLASS 7

RÖHM produces cleanroom-compatible clamping, gripping and handling technology with maximum vertical integration. Final production and packaging also take place in our own cleanroom tent up to cleanroom class EN ISO 7. This even includes the installation of larger assemblies.

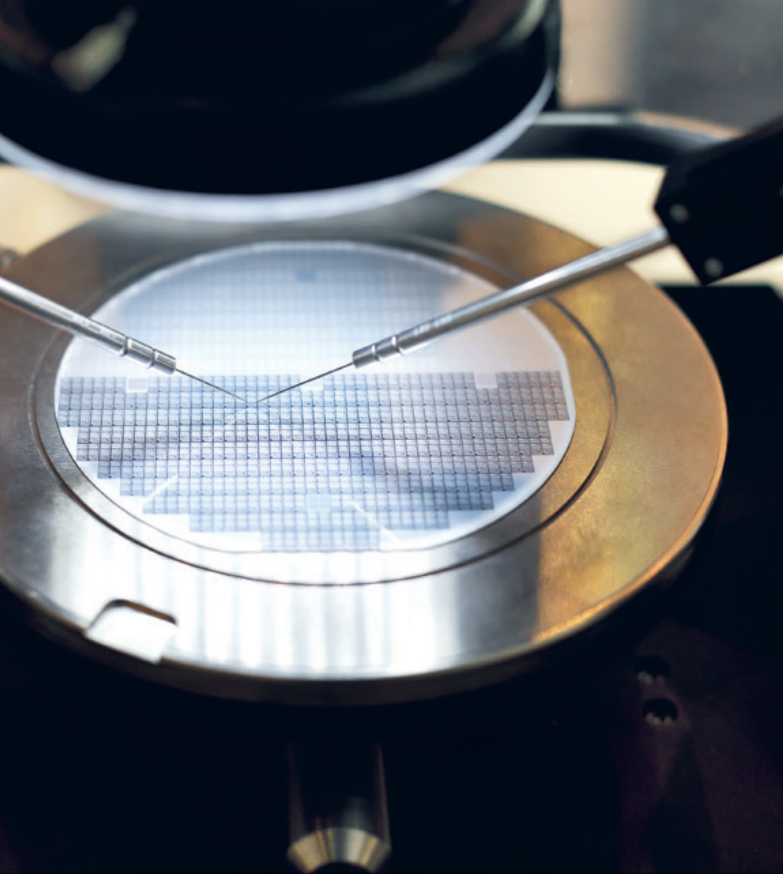
If cleanroom-compatible products in a higher class are required, certified suppliers take over the final cleaning and packaging. Plans are currently underway for a permanent cleanroom building.



THE CLEANROOM TENT FROM RÖHM

Planning and equipment	MCRT, Heuchelheim
Cleanroom class	ISO 7
Maximum manageable component volume	approx. 2 m ³
Maximum manageable component mass	1,000 kg
Upstream cleanroom	with material and personnel lock, with cleaning baths for incoming and outgoing objects
Other features	ESD protection floor, dark room with particle measuring technology





INDIVIDUAL COMPONENTS OR ENTIRE ASSEMBLIES – ALL CLEANROOM-COMPATIBLE

- Swivel units
 - Upgrade devices
 - Retrofit devices
 - Add-on modules
 - Carrier frames
 - Handling devices
 - Handling frames
 - Transport carts
 - Transport devices
 - Buffer storage inserts
 - Absorber plates
 - Sealing plugs
 - Clamping heads
 - Holding fixtures (chucks)
 - Support pins (pins)
 - Mechanical assemblies
-

More at:

www.roehm.biz/reinraum



RÖHM GmbH Heinrich-Roehm-Straße 50 • 89567 Sontheim/Brenz • Germany
TEL +49 7325 16 0 • info@roehm.biz • roehm.biz